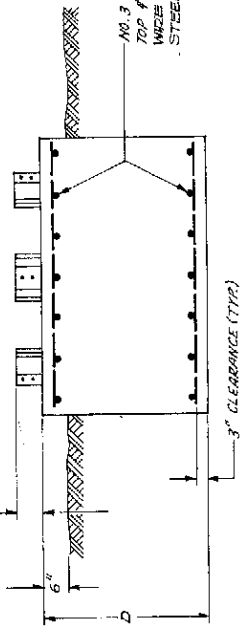


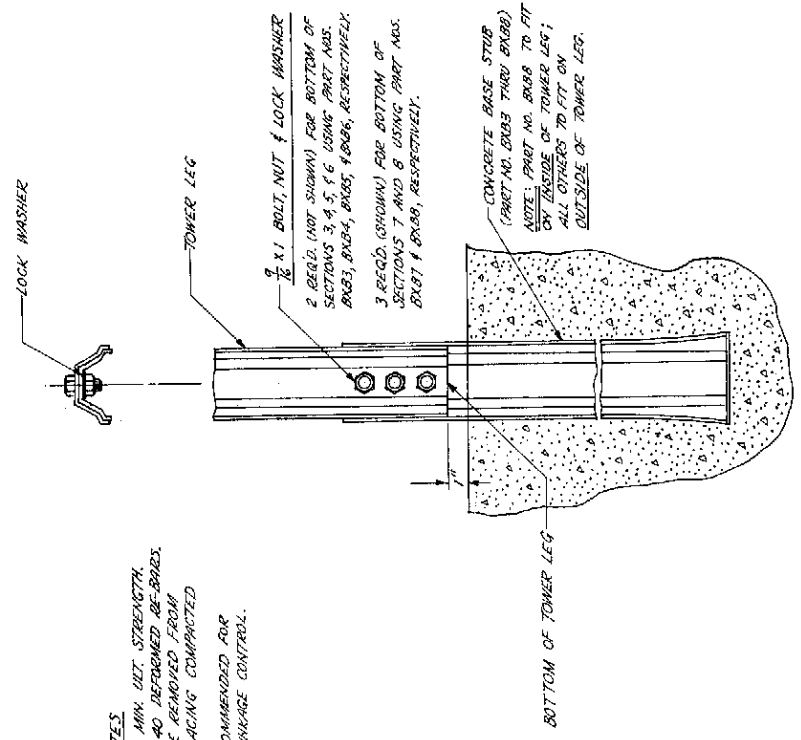
FOUNDATION NOTES

1. CONCRETE, 3000 PSI MIN. ULT. STRENGTH.
2. ASTM A-615 GRADE 40 REINFORCED RE-BARS.
3. ALL FORMS MUST BE REMOVED FROM CONCRETE BEFORE PLACING COMPACTED BACK-FILL.
- * 4. REINFORCING IS RECOMMENDED FOR TEMPERATURE & SHRINKAGE CONTROL.

PROJECTION: 4 1/2" FOR PART NOS. EX83, EX84, EX85, & EX86
6" FOR PART NOS. EX87 & EX88



SECT. NO.	W	X	D	CU. YDS. CONCR.	A
3	3'-6"	1'-9"	4'-0"	1.8	1'-0 1/2"
4	4'-0"	2'-0"	4'-0"	2.4	1'-2"
5	4'-6"	2'-3"	4'-0"	3.0	1'-3 1/4"
6	4'-9"	2'-4 1/2"	4'-0"	3.4	1'-3 3/4"
7	5'-3"	2'-7 1/2"	4'-0"	4.1	1'-4 1/2"
8	5'-9"	2'-10 1/2"	4'-0"	4.9	1'-5"



- 2 REQ'D. (NOT SHOWN) FOR BOTTOM OF SECTIONS 3, 4, 5, & 6 USING PART NOS. EX83, EX84, EX85, & EX86, RESPECTIVELY.
- 3 REQ'D. (SHOWN) FOR BOTTOM OF SECTIONS 7 AND 8 USING PART NOS. EX87 & EX88, RESPECTIVELY.

REV.	DESCRIPTION	DATE	BY
1			

Unarco-Rohn
Division of Unarco Industries, Inc.

FOUNDATION FOR BX TOWER CONCRETE BASE STUBS

Scale: NONE
 Drawn by: AED
 Date: 5-24-78
 Checked by: CWJ
 Date: 5-24-78
 Approved by: [Signature]
 Date: 5-24-78

Drawing Number: **C7802842**